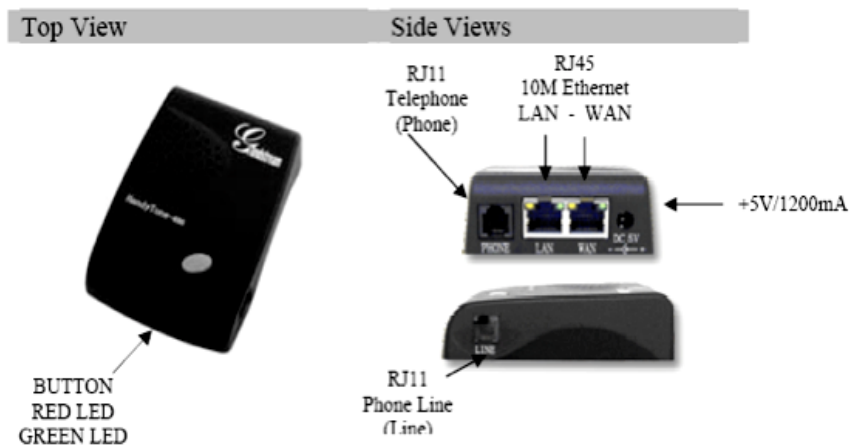


## Analogue Telephone Adapter (ATA) Installation Guide



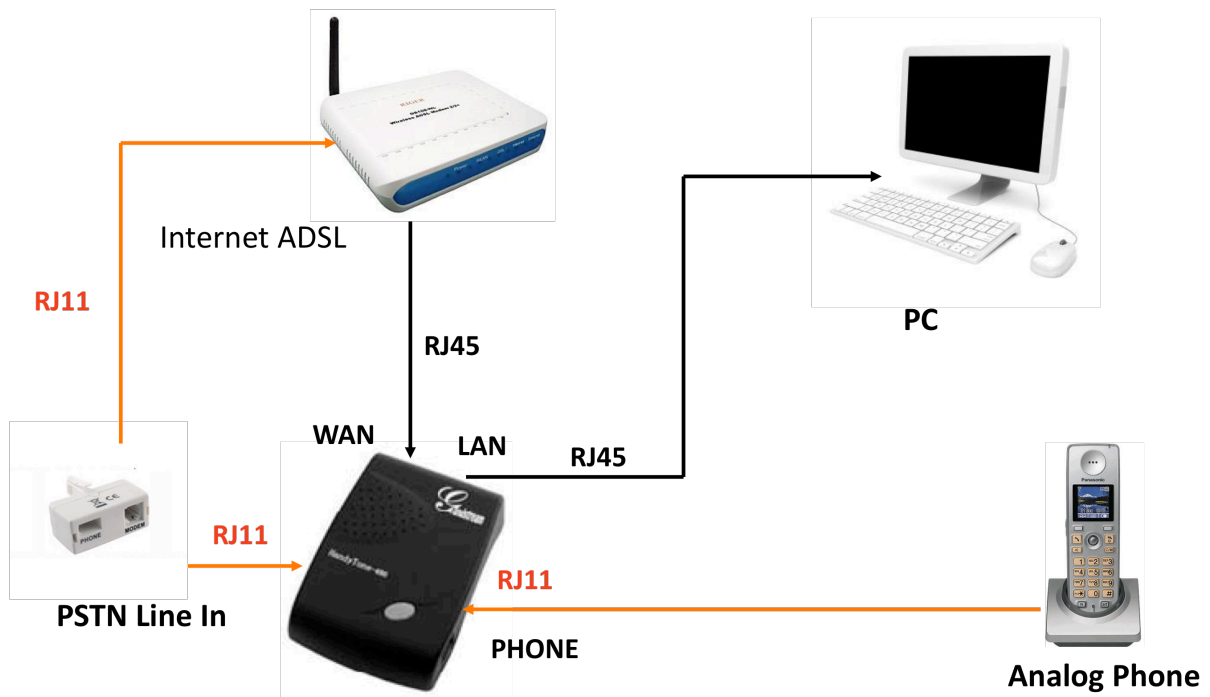
Analogue Telephone Adapter or ATA is a device used to connect your analogue telephone to the internet to be able to make BBphone calls.

### ATA interfaces



The various types of interfaces are shown in this diagram above.

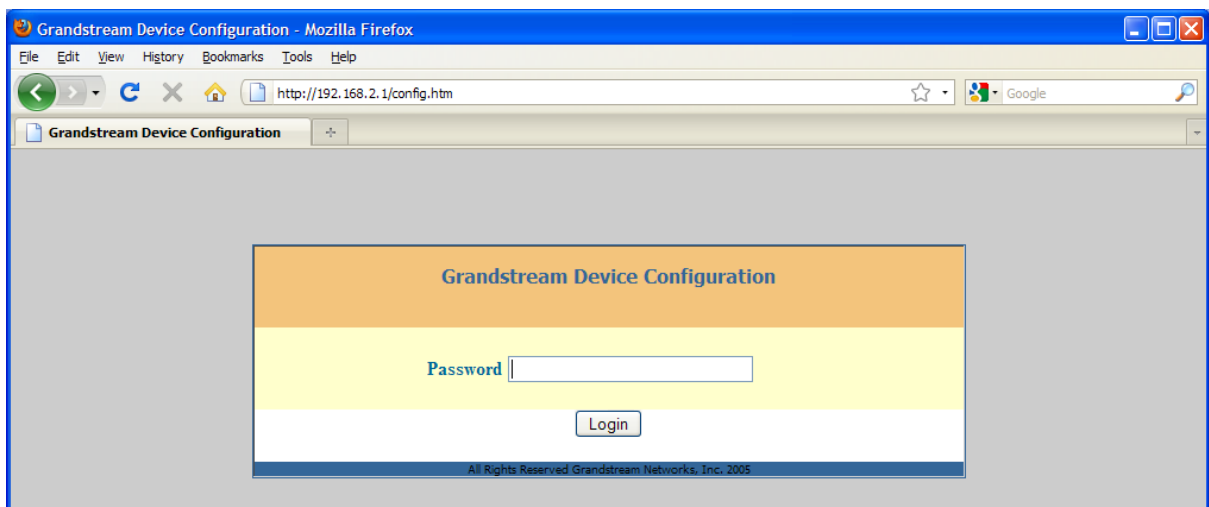
## ATA Setup Diagram



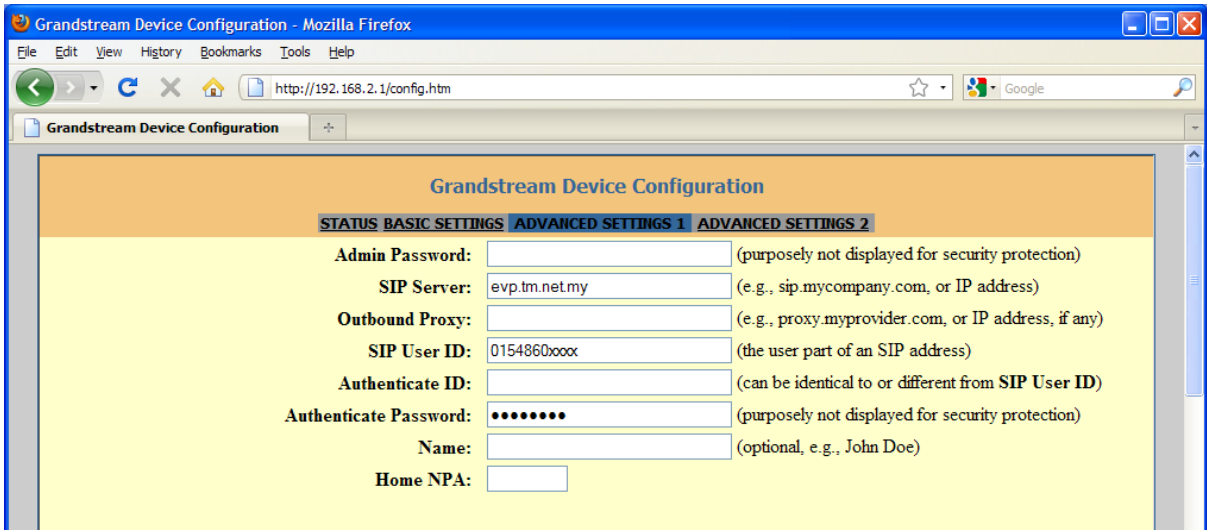
The diagram above shows how to connect the ATA to the modem, PC and telephone.

## How to Provision/Install ATA

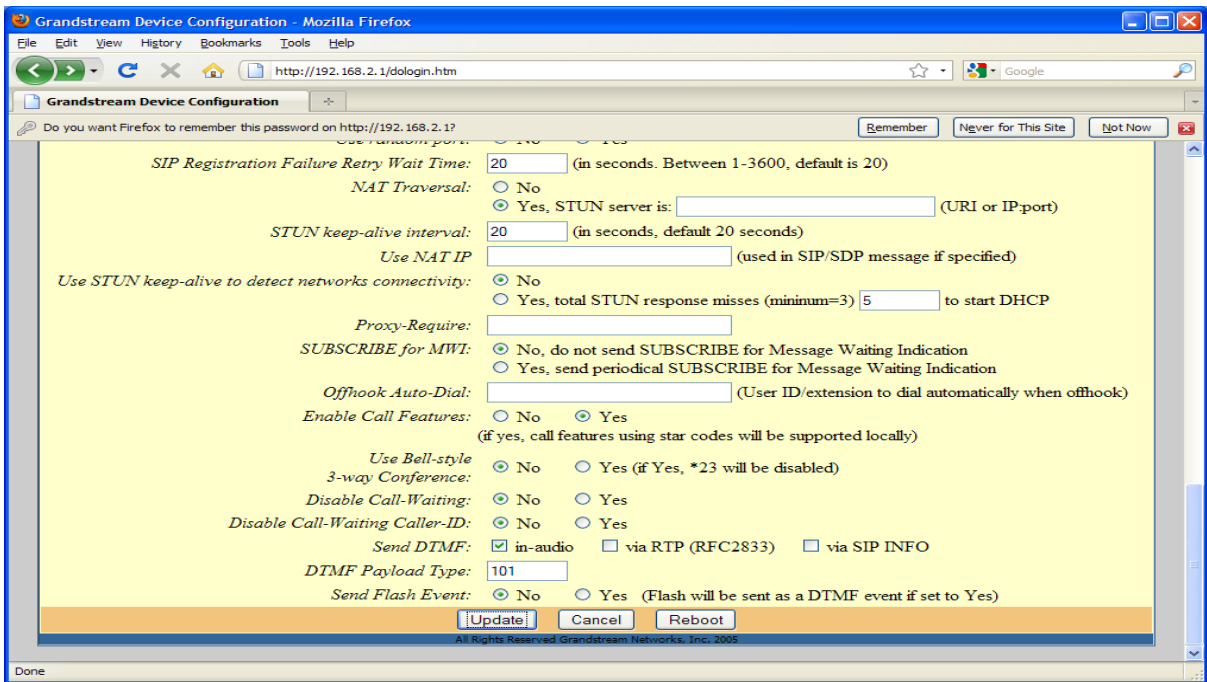
1. Connect the PC to the LAN port
2. Open the Web browser and enter the
3. <http://192.168.2.1>



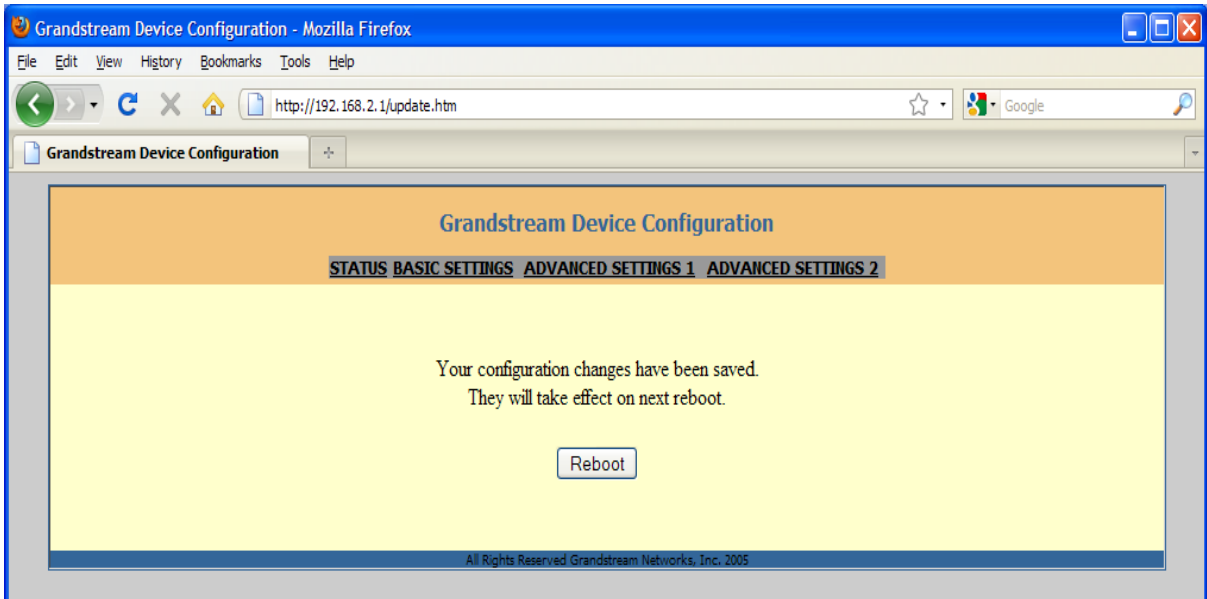
4. Enter Password "admin" and click Login



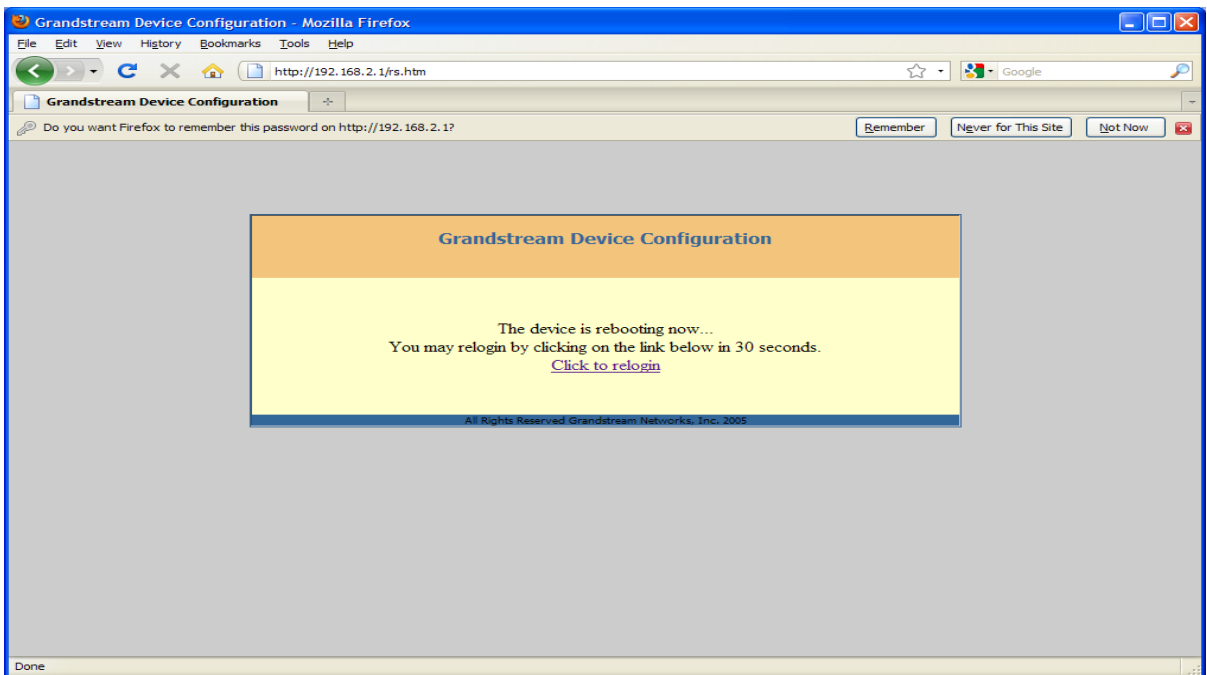
5. Click on the Advance Setting 1
6. Enter the SIP User ID: 0154 XXX XXXX
7. Enter Authenticate Password: password provided in the notification email sent to your email.



8. Click the Update button at the bottom of the page



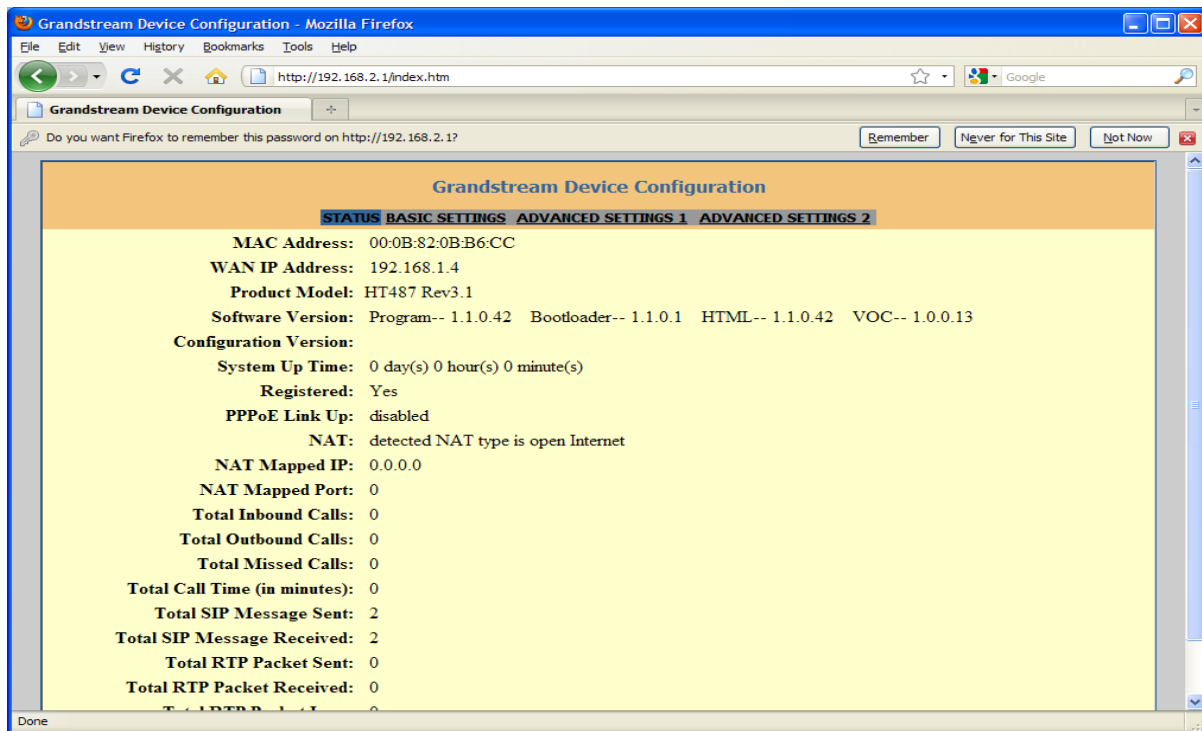
9. Click on “Reboot” to save changes and reboot the ATA.



10. Click “Relogin” and check the Status tab.

11. Click on STATUS page.

## 12. Check Registered is : "Yes"



## 13. Now device is ready to make calls

### 14. To place BBphone calls

- Dial the required number
- (eg. 015-xxxxxxx) / 013- xxxxxx/ 03-xxxxxxx)
- To make call through PSTN line
- Dial \*9 followed by the required number